



Sanitary Housings for Membrane Filtration Systems

Housings

Alfa Laval sanitary, stainless steel housings are designed for full-fit spiral elements. All materials comply with FDA regulations (CFR) Title 21 and the housings are thus suitable for use within the food and pharmaceutical industries.

Advantages

- Quick and simple exchange of spiral elements
- High operating temperature (80°C)
- Low energy consumption and minimised element by-pass flow due to precise diameter and circumference tolerances
- Rack-mounted design
- Low weight and small internal volume
- Large ports and ideal flow distribution

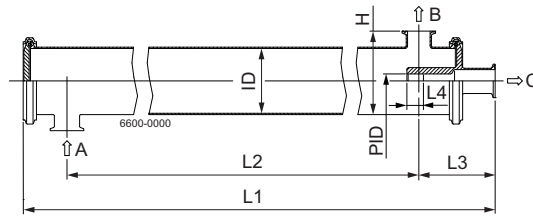
Housings for 3.8", 6.3", 8.0" and 8.4" full-fit spiral elements

- External surface ground K320
- End cover gaskets in FDA compliant materials
- Tri-clamp connections for feed, retentate and permeate according to ISO 2852



Housing designation (order code)

M3.8-5-PN40		
3.8	=	Inner diameter of housing (3.8") which corresponds to the outer diameter of the spiral element
5	=	Number of spiral elements which can be loaded
PN40	=	Pressure



Drawing of M6.3 housing

A = Feed
B = Retentate
C = Permeate

Housing									Port connections (TC, ISO, Nominal Size)	
Type (Order Code)	Dimensions (mm)								Feed and retentate	Permeate
	L1	L2	L3	L4	ID	PID	H			
M3.8-	1-PN40	1250	1060	115	25	97.6	21.0	75	38	25
	2-PN40	2240	2050	115	25	97.6	21.0	75	38	25
	3-PN40	3230	3040	115	25	97.6	21.0	75	38	25
	4-PN40	4220	4030	115	25	97.6	21.0	75	38	25
	5-PN40	5210	5020	115	25	97.6	21.0	75	38	25
M6.3-	1-PN16	1260	1070	109	40	163	28.9	108	51	38
	2-PN16	2250	2060	109	40	163	28.9	108	51	38
	3-PN16	3240	3050	109	40	163	28.9	108	51	38
M8.0-	1-PN16	1325	1085	137	70	203	28.9	135	51	38
	2-PN16	2315	2075	137	70	203	28.9	135	51	38
	3-PN16	3305	3065	137	70	203	28.9	135	51	38
M8.0-	1-PN40	1406	1123	155	70	203	28.9	157	51	38
	2-PN40	2422	2139	155	70	203	28.9	157	51	38
	3-PN40	3437	3154	155	70	203	28.9	157	51	38
	4-PN40	4457	4174	155	70	203	28.9	157	51	38
	5-PN40	5473	5190	155	70	203	28.9	157	51	38
M8.0-	1-PN64	1402	1155	137	70	203	28.9	151	51	38
	2-PN64	2422	2175	137	70	203	28.9	151	51	38
	3-PN64	3437	3190	137	70	203	28.9	151	51	38
	4-PN64	4457	4210	137	70	203	28.9	151	51	38
	5-PN64	5477	5230	137	70	203	28.9	151	51	38
M8.4-	1-PN10	1325	1085	137	70	215	31.15	135	63.5	38
	2-PN10	2315	2075	137	70	215	31.15	135	63.5	38

Other types of housings are available on request.

Pipe, end covers and ports in stainless steel (AISI 316L or equal). Inside surfaces 32-1.6 µm roughness.

Total length of spiral elements and ATD's must be less than dimension L2 minus feed port dimension.

One pair of saddles and straps per housing is included.

Housing end cover closures:

Clamp ring is used for housings with pressure rating ≤ 16 bar and for 3.8" housings with pressure rating 40 bar. Segmented lock rings are used for other housings.

Alfa Laval reserves the right to change specifications without prior notification. ALFA LAVAL is a trademark registered and owned by Alfa Laval Corporate AB.

ESE00649EN 1201

© Alfa Laval

How to contact Alfa Laval

Contact details for all countries are continually updated on our website. Please visit www.alfalaval.com to access the information direct.